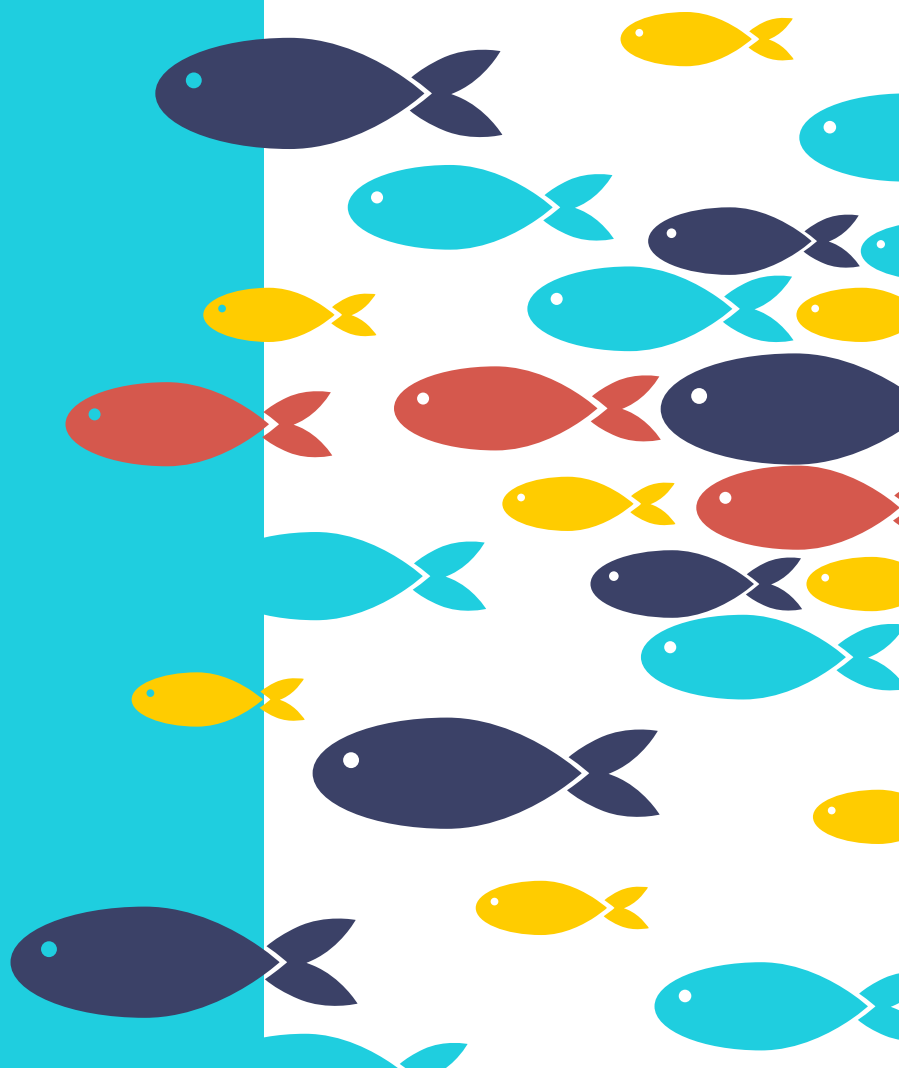




TAMPA BAY WATCH  
DISCOVERY CENTER

# SUMMER CAMP 2022





# SUMMER CAMP 2022

**MORE INFORMATION**

## TAMPA BAY WATCH DISCOVERY CENTER CAMPS



Have an exPIERience you will never forget! Join the Tampa Bay Watch Discovery Center for exceptional week-long, day camp sessions. Explore marine science topics through our exhibit galley, boat trips, snorkeling, species collection, crafts, and hands on science labs. This is a camp you won't want to miss!

**WE OFFER FUN-FILLED, WEEK-LONG CAMPS FOR SPECIFIC AGE GROUPS, WITH FUN MARINE SCIENCE THEMES THAT WILL INCLUDE TOPICS LIKE: SHARKS/FISH, MARINE MAMMALS, REPTILES, ADAPTATIONS, INVASIVE SPECIES AND MORE! NEW TOPICS KEEP CAMP NEW AND EXCITING ESPECIALLY FOR OUR RETURN CAMPERS!**



### OVERVIEW

Throughout the week, campers will spend their days snorkeling estuary waters, boating on our brand new USCG-inspected classroom boat, participating in hands-on marine science labs, observing bay life, collecting and studying the numerous Tampa Bay inhabitants with our seine nets and otter trawl and enjoying all that the St. Pete Pier has to offer!

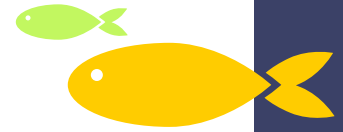
<b>Sea Squirts (Ages 6-8)</b>	<b>Tarpon (Ages 9-12)</b>
<b>Monday - Friday (9AM-4PM)</b> June 20-24 July 18-22 August 1-5	<b>Monday - Friday (9AM-4PM)</b> June 13-17 June 27-July 1 July 11-15 July 25-29
\$350 per week	\$350 per week





# SUMMER CAMP 2022

## MORE INFORMATION



### REGISTRATION

Registration will open for all of Tampa Bay Watch's Discovery Center Summer Camps on **Monday, March 7, 2022**. All participants must register online through our portal on our website [tbwdiscoverycenter.org/summer-camps/](http://tbwdiscoverycenter.org/summer-camps/). If trying to register multiple children (siblings, cousins, friends, etc.) in a camp week, be sure to do so at the same time for the best chance at having them together. We cannot hold spots or guarantee multiple children to be registered in the same camp session.

### AGE RESTRICTIONS

All campers must be the appropriate age by the start of their camp session; no exceptions. Sea Squirt – 6-8 years old, Tarpon – 9-12 years old.

### MEMBERSHIP:

Becoming a member of Tampa Bay Watch allows you 10% off all summer camps. Please purchase, renew, or verify your membership prior to registration. You can renew your membership at any time. Membership can be renewed at our facility, online at [tbwdiscoverycenter.org/become-a-member/](http://tbwdiscoverycenter.org/become-a-member/), or by calling the Tampa Bay Watch Discovery Center at (727)-291-4103.

### SCHOLARSHIP DISCOUNT

If you have been awarded a scholarship, please call Tampa Bay Watch (727)-291-4103, or email [srubin@tampabaywatch.org](mailto:srubin@tampabaywatch.org) for detailed registration information.

### SCHOLARSHIPS

Generous donations allow Tampa Bay Watch to offer several summer camp scholarship opportunities each year, and we hope to continue to be able to offer them this year at the Tampa Bay Watch Discovery Center. Please visit [tbwdiscoverycenter.org/summer-camps/](http://tbwdiscoverycenter.org/summer-camps/) to obtain and submit a scholarship application. Please read full terms and conditions before applying. If you are interested in donating to our scholarship fund, please contact us!

### CAMP DOCUMENTS

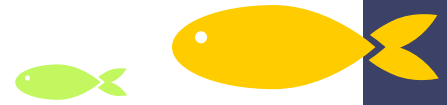
All camp documents and waivers will be filled out at the time of registration (Liability Waiver, Medical Consent, Media Release, Code of Conduct, Cancellation/Refund Policy, and Nut Free Policy). No additional documents will be required on the first day of camp.





# SUMMER CAMP 2022

## MORE INFORMATION



### CAMP PHOTOS

Throughout the week of camp, counselors will be taking photos to capture all of the fun your child is having. Photos will be made available at the end of the summer at no charge through Shutterfly. The Shutterfly link will be accessible through the Tampa Bay Watch Discovery Center camp website. Please give staff ample time to upload camp photos succeeding all scheduled summer camp sessions.

### LOCATION AND FACILITY

The Tampa Bay Watch Discovery Center summer camp program is located at the St. Pete Pier at our public outreach center which encompasses our outdoor wet-classroom, exhibit galley and back classroom space. This ideal coastal location in the heart of St. Pete offers limitless fun for all ages. The brand new pier not only hosts the Tampa Bay Watch Discovery Center but additionally offers 26 beautiful acres that combine the waters of Tampa Bay, green space, splash pad, playgrounds and more. Our facility provides a perfect home base for our summer campers to engage in hands-on opportunities to learn about marine science, have fun, and gain an unforgettable experience! Our facility features roughly 3,000 square feet of indoor space – 2,000 of which is our exhibit galley that tells the story of Tampa Bay's unique water ecosystem through hands on exhibits and aquariums. Our facility also includes an outdoor wet-classroom on the Pier with stadium seating and our brand new USCG-certified catamaran Eco-Vessel, which is moored on the St. Pete Pier. Our Eco-Vessel allows us to provide an on-the-water classroom space.

### TRANSPORTATION

Campers must provide their own means of transportation to and from camp. The St. Pete Pier has paid parking and offers over 500 on-site parking spaces, as well as extensive bike parking and access via the Downtown Looper and Central Avenue Trolley. Camp starts at 9:00 a.m. and ends at 4:00 p.m. There will be a drop off/pick up location near the parking lot of Doc Fords where staff members will be stationed.

### STAFF & COUNSELORS

With degrees in biology, marine biology, and environmental sciences, our professional staff has numerous years of experience teaching students of all ages in both formal and informal settings. They are on site facilitating each day of camp throughout the summer and hold certifications in First Aid/CPR/AED. We are also fortunate to have college interns helping us with various sessions. All staff and counselors have gone through Level 2 background screening through the Division of Children and Families.



# SUMMER CAMP 2022

## MORE INFORMATION



### CANCELLATIONS

No refunds will be issued for cancellations within 14 days of session start date, if camper does not show up for camp session, or if camper is dismissed from camp by camp staff for behavioral issues. Prior to 14 days before session start date, cancelled registrations will be assessed for a refund and a \$25 administrative fee will be applied if a refund is awarded. If you have questions about a refund please contact us at [srubin@tampabaywatch.org](mailto:srubin@tampabaywatch.org) or call (727) 291-4103.

### FOUL WEATHER

We do our best to ensure that all planned activities are accomplished throughout the week, but safety is our first priority, and camp staff and captains reserve the right to change the daily schedule based on weather conditions (e.g. rain, high winds, red tide). Canceled boating or water activities will not warrant a refund. In the event of more extreme foul weather (e.g. tropical storm, hurricane, power outage, etc.) where a camp session cannot be completed, the schedule will be adjusted and refunds will be considered on a case-by-case basis. Tampa Bay Watch will monitor red tide throughout the year, and updates will be given. If you decide to cancel due to red tide, Tampa Bay Watch will offer a full refund as long as cancellation is communicated 7 days prior to the camp start date.



### MEALS

Campers must pack a tree-nut free lunch each day. It is also recommended that all campers pack light snacks that are easy to eat "on the go" for mid-morning and afternoon. We will provide some small snack foods as well. If your camper has dietary restrictions, be sure to list these during registration so we can discuss any accommodations that may need to be made. Each Friday of camp a lunchtime pizza party will be provided by the Tampa Bay Watch Discovery Center. If your child has any dietary restrictions, please ensure that they still pack a lunch for Friday.

### NUT-FREE NOTICE

All Tampa Bay Watch summer camps are nut-free to maintain a healthy environment for those with severe nut allergies. Tree nut and peanut products of any sort are not permitted at Tampa Bay Watch. This includes, but is not limited to: almonds, cashews, hazelnuts, macadamia nuts, pecans, peanuts, pine nuts, pistachios, walnuts, and nut butters of these varieties. Please pack your camper's lunches and snacks accordingly. Please note that Tampa Bay Watch staff reserves the right to withhold any nut product and return items home with the child at the end of the camp day. We greatly appreciate your help in keeping our campers safe and healthy.

### IMPORTANT HEALTH RESTRICTIONS

If your camper has special dietary, mental, or physical needs or restrictions, please contact us directly prior to registering, to be sure we can accommodate your child. All medications sent with campers will need to be labeled, turned into staff at check-in, and left at TBW Discovery Center for the week if possible.





# SUMMER CAMP 2022

## MORE INFORMATION

### ACTIVITIES AND CAMP THEMES

All campers will get a chance to spend time in our exhibit galley, learn through hands-on marine science labs, spend fun in the sun snorkeling, collecting animals and spending time on our classroom boat! In addition to our core programs in which all campers will participate, to keep our camp fun and fresh, each camp will be themed! See camp week themes and descriptions below!

#### **SEA SQUIRTS (6-8 YO): MONDAY- FRIDAY (9AM-4PM)**

##### **June 20-24 Animals Big & Small**

From teeny, tiny to absolutely ginormous, animals come in all colors, shapes, and sizes. Come compare and contrast what makes these animals special to the land and to the ocean.

##### **July 18-22 Show and Shell**

Turtles would surely look different without their shell to protect them! Shell-ebrate the importance of shells for the life that relies on them to survive. Each day we will learn and interact with species who have unique methods for protection.

##### **August 1-5 Critter Conservation**

There is a wide variety of living creatures in the world, and many of them call the Tampa Bay Estuary their home. Together we will learn about the types of species in our environment, and ways we can help protect their home.

#### **Tarpon (9-12 yo): Monday- Friday (9AM-4PM)**

##### **June 13-17 Athletic Animals**



Would a cheetah beat a sailfish in a race? Is a shark's jaw stronger than a lions? Come learn about the special advantages certain animals have over one another, and whether they have what it takes to be considered an apex predator.

##### **June 27- July 1 Eco-Explorers**

Discover what species live within different habitats, from the sweltering desert all the way to the freezing tundra. Join us as we explore the variety of habitats found all across the globe.

##### **July 11-15 Ocean Heroes**

Do you have what it takes to be an ocean hero? Investigate some of the threats our ecosystem faces, and identify solutions that can protect our wildlife. Learn ways to make responsible, eco-friendly choices in your everyday life.

##### **July 25-29 Athletic Animals**

Would a cheetah beat a sailfish in a race? Is a shark's jaw stronger than a lions? Come learn about the special advantages certain animals have over one another, and whether they have what it takes to be considered an apex predator.





# SUMMER CAMP 2022

## MORE INFORMATION

### WHAT TO BRING EACH DAY

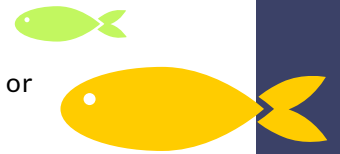
Please label all gear to ensure it stays with your camper.

**Required:**

- Swimsuit and clothes that can get wet/dirty
- T-shirt to wear during water activities (all campers receive a Tampa Bay Watch camp shirt)
- Packed lunch
- Sunscreen (lotion, not spray on, and ocean-friendly is suggested)
- Water bottle (all campers receive a reusable water bottle)
- Water shoes or old tennis shoes that completely cover foot and heel (cinch-down or tie-down are best)
- Flip flops or crocs to change into after water time
- Towel
- Additional change of clothes
- Snorkel gear-mask/snorkel and fins
- Extra t-shirt for craft activity

**Suggested:**

- Hat
- Sunglasses
- Sunshirts/ rashguards
- Bug repellent
- Snacks



### COVID-19 NOTICE

Summer camp registration takes place several months in advance of our summer camp programming. The Tampa Bay Watch Discovery Center will follow all appropriate protocols and safety precautions that are relevant at the time of the program. We will update all camp registrants of protocols closer to the camp date. Camper and staff safety is a number one priority of the Tampa Bay Watch Discovery Center.

### CONTACT US

For questions regarding our Tampa Bay Watch Discovery Center camps please, contact our **Education Coordinator**, Sarah Rubin, at [srubin@tampabaywatch.org](mailto:srubin@tampabaywatch.org)

